

Benefits of Advancea™ X-ray Detectable Sponges to Hospital

1

Fewer x-ray sponges are required due to triple absorption capacity of Advancea vs. gauze x-ray detectable sponges.

Equal weight and size, Advancea absorbs more than triple the liquid volume of traditional gauze x-ray detectable sponges.

Left: Advancea™
X-ray Detectable Sponges, 5's
4" x 4", 6 ply
4" x 8", 8 ply



Right: Gauze
X-ray Detectable Sponges, 10's
4" x 4", 16 ply
4" x 8", 12 ply

Advancea™ : bundled in 5's
Gauze: bundled in 10's

2

Safer than gauze X-ray detectable sponges

- Easy to spot and retrieve, fewer to count.
- Lower risk of infection, no lint, no loose threads, softer and non-adherent surface.

3

Huge cost savings when using Advancea™ sponges:

- > 50% of original expenditure
- Fewer sponges required (from 10's to 5's)
- Less time and labor to count, retrieve and recount 5's than 10's
- Lower operating cost for scanning system or RF sensor device for 5's
- Lower insurance and legal costs for 5's.

Advantages of Advancea™ X-ray Detectable Sponges

1. Triple absorbency over comparable gauze sponges.
2. Easier to spot and more unlikely to be left in patients.

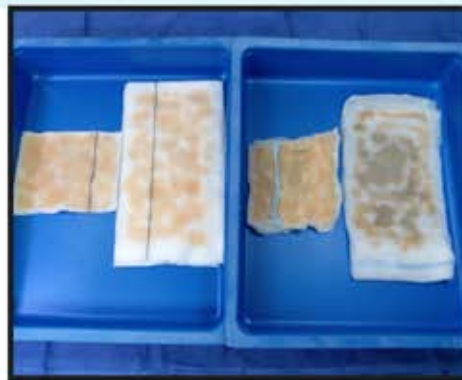
Left: Advancea™ Sponges
4" x 4", 6 ply, 2.6 gram
4" x 8", 8 ply, 5.5 gram



Right: Gauze Sponges
4" x 4", 16 ply, 3.0 gram
4" x 8", 12 ply, 5.4 gram

Left: Advancea™ Sponges
4" x 4", 6 ply
4" x 8", 8 ply

Top View: After squirting 15 cc of liquid, Advancea™ sponges are not fully soaked.



Right: Gauze Sponges
4" x 4", 16 ply
4" x 8", 12 ply

Top View: After squirting 15 cc of liquid, 4" x 4" gauze sponge is fully soaked.

Left: Advancea™ Sponges
4" x 4", 6 ply
4" x 8", 8 ply

Bottom View: After squirting 15 cc of liquid, no trace of liquid is seen at the bottom layer of the Advancea™ sponges, which make the sponges easier to spot after surgical procedures.



Right: Gauze Sponges
4" x 4", 16 ply
4" x 8", 12 ply

Bottom View: After squirting 15 cc of liquid, both gauze sponges have fluid strike-through the bottom layer.